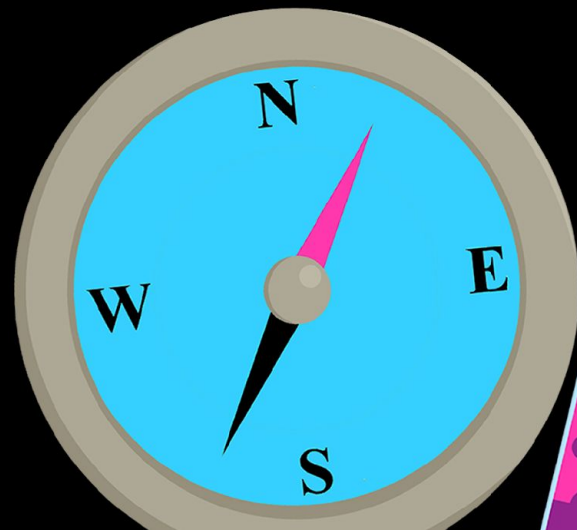
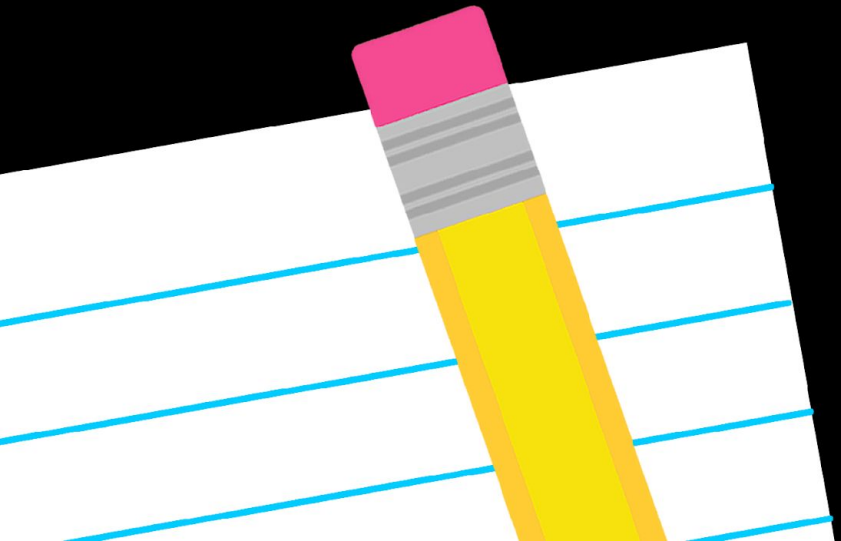


Welcome,  
Families!



# Teacher Introduction

## **Contacts:**

Susan\_K\_Brown\_@mcpsmd.org

240-740-0940

<https://mrswhite5.weebly.com/>



# Classroom Procedures

- School starts at 9:20 a.m.
- If students are not at school by 9:25, they are marked tardy.
- Tardy students must obtain a Tardy Slip from the front office and place their lunch order with the cafeteria before proceeding to class.



# Classroom Procedures

## Technology



- Chromebooks, Chrome, Promethean, ActivExpressions, 3-D printers, etc.

## Make-up work (“Ketchup” Folders)

- Student’s responsibility to make up work at home and return it in a timely manner (2 days)

## Birthdays

- Store bought treats, handed out at lunch



# Classroom Procedures

## Feedback

- Friday Folders
- Google Classroom
- Google Docs/Slides- Comments & Edits
- Progress Reports (mid marking period)
- Parent-Teacher Conferences (November)

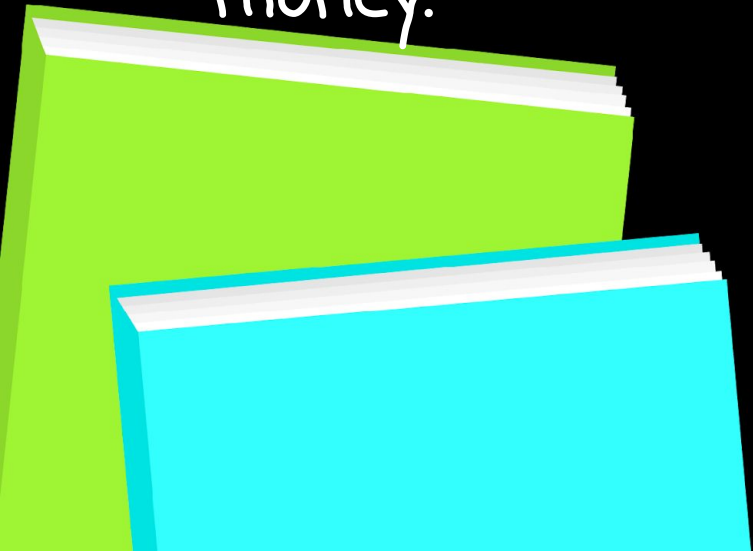
Friday  
Folder



# Classroom Procedures

## Behavior Management

- Developed class rules together based on the 5 Wildcat Ways
- 3 Strikes- Warning, Money, Reflection Form
- Mermaid Money
  - Students who complete their classroom jobs and go above and beyond during the school day will earn money.
  - Students who do not follow the class expectations will owe money.
    - The amount will vary based on behavior.



# Mrs. White's Class Schedule

2018- 2019

Monday	Tuesday	Wednesday	Thursday	Friday
9:20-9:40 Arrival & Morning Meeting	9:20-9:40 Arrival & Morning Work	9:20-9:30 Arrival (Students go straight to Music)	9:20-9:40 Arrival & Morning Meeting	9:20-9:40 Arrival & Morning Meeting
9:40-10:25 Writing	9:40-10:25 P.E.	9:30-10:15 Music	9:40-10:30 Science & Social Studies	9:40-10:30 Writing
10:30-11:15 Media	10:25-11:00 Writing	10:15-10:45 Writing	10:30-11:10 Chorus	10:30-12:15
11:00-12:40	11:00-12:40	10:45-12:40	11:10-12:40	Readers' & Writers' Workshop
Readers' & Writers' Workshop	Readers' & Writers' Workshop	Readers' & Writers' Workshop	Readers' & Writers' Workshop	12:15-12:40 Science & Social Studies
12:40- 1:10 Lunch	12:40- 1:10 Lunch	12:40- 1:10 Lunch	12:40- 1:10 Lunch	12:40- 1:10 Lunch
1:10- 1:50 Recess	1:10- 1:50 Recess	1:10- 1:50 Recess	1:10- 1:50 Recess	1:10- 1:50 Recess
1:50-2:25 Science & Social Studies	1:50-2:25 Science & Social Studies	1:50-2:25 Science & Social Studies	1:50-2:35 Art	1:50-2:25 Science & Social Studies
2:25-3:45	2:25-3:45	2:25-3:45	2:35-3:45	2:25-3:45
Math Workshop	Math Workshop	Math Workshop	Math Workshop	Math Workshop
3:45-3:50 Dismissal	3:45-3:50 Dismissal	3:45-3:50 Dismissal	3:45-3:50 Dismissal	3:45-3:50 Dismissal

# Specials Schedule

Mondays 10:30-11:15

Mondays 1:50-3:30

Tuesdays 9:40-10:25

Wednesdays 9:30-10:15

Thursdays 10:30-11:10

Thursdays 1:50- 2:35

Media

Adv. Instrumental (schedule rotates)

P.E.

Music

Chorus

Art





# THE MEANING OF GRADED ASSIGNMENTS

**A**

- Evidence demonstrates a full understanding of content, concept, or skill
- Errors or omissions are absent or do not impact understanding

**B**

- Evidence demonstrates general understanding of content, concept, or skill with minimal support
- Errors or omissions may impact understanding

**C**

- Evidence demonstrates some understanding of content, concept, or skill with some support
- Errors or omissions impact understanding

**D**

- Evidence demonstrates a limited or minimal understanding of content, concept, or skill with significant support
- Errors or omissions are critical and impact understanding

# THE MEANING OF REPORT CARD GRADES

**A**

The student *consistently* demonstrates mastery of the grade level standards taught this marking period.

**B**

The student *frequently* demonstrates mastery of the grade level standards taught this marking period.

**C**

The student *periodically* demonstrates mastery of the grade level standards taught this marking period.

**D**

The student *rarely* demonstrates mastery of the grade level standards taught this marking period.

**M**

Missing data- no score recorded

**NEP**

Not English Proficient- no grade recorded. Student is at the beginning level of English language proficiency. NEP may be used for level 1 or 2 ESOL student for no more than 2 marking periods.

# Reading Levels Grades 3-5

- All students will be reading grade-level and above grade-level text daily
- Instructional Reading Level will no longer be reported
- Teachers will use ON, ABOVE, or BELOW to indicate student's reading level

## Above

Your child reads and comprehends text within and above the grade level band and receives instruction and enrichment with text above the grade level band during small group instruction.

## On

Your child reads and comprehends text within the grade level band and receives small group instruction to provide support, instruction, and enrichment with text as needed within the grade-level band.

## Below

Your child needs significant support to read and comprehend text within the grade level band and receives targeted support with text below the grade-level band during their small group instruction.

# Math

## Math 5 Measurement Topics

- Operations & Algebraic Thinking
- Geometry
- Number and Operations in Base 10
- Measurement and Data
- Number and Operations: Fractions



# Math

## Math 5/6 MTs

MP1: 5<sup>th</sup> Grade Topics

MP 2-4: 6<sup>th</sup> Grade Topics

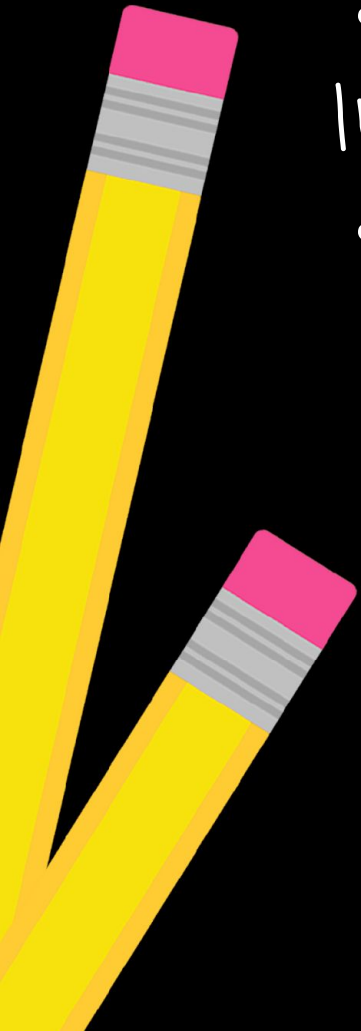
- Numbers & Operations Fractions (5)
- Numbers & Operations Base Ten (5)
- Measurement, Statistics, & Probability (5/6)
- Expressions & Equations (6)
- Geometry (6)
- The Number System (6)
- Ratio & Proportional Relationships (6)

All Math 5/6 students will start in Ms. Riggsbee's room for a whole group lesson. Then half of the students will move to another classroom for small group instruction.

# Math

## Workshop Model (65-80 minutes)

- First 15-20 minutes: Whole Group Instruction
- Rotate through centers
  - Small Group Instruction
  - Independent Work
  - Online Activity
  - Partner Work
  - Math Game
  - Assessment



# Reading

- **Literary Text**
- **Informational Text**
- **Language Vocabulary**



# Reading

## Literary Texts

- Historical Fiction
- Plays
- Poetry
- Traditional Stories
- Mystery
- Realistic Fiction
- Adventure Stories
- Graphic Novels

## Informational Texts

- Literary Nonfiction
- Articles
- Extended Informational Text
- Firsthand/Secondhand Accounts
- Technical Text
- Graphic Text
- Multimedia Formats



# Reading

- **Language Vocabulary**
  - Collaborative Discussion
    - Peer Discussion
    - Literature Study
    - Shared Inquiry
    - Socratic Seminar
  - Vocabulary Development
    - Figurative Language



# Reader's Workshop

- Small Groups
  - Guided Reading
  - Flexible Needs Based
  - Discussion Groups
  - Literature Circles
- Independent Reading
- Read Alouds
- Readers' Responses
- Listening to Texts
- Task Cards
- Online Activity
- Close Reading



# Writing

## Measurement Topics

- Narrative Writing (all except MP4)
- Informative Writing (all except MP3)
- Opinion Writing
- Research, Process, & Production
- Use of Language  
(Spelling, Grammar, & Roots Study)



# Word Work

- Focus is on learning and understanding spelling patterns and word/ word part (i.e. root) meaning not on rote memorization of word list
- Phonics, Spelling, and Vocabulary instruction through daily word study.
- Spelling stage (stage of spelling development) assessed using initial spelling inventory
- FLEXIBLE spelling groups

tion  
sion

# Word Work

## Words Their Way

- Differentiated instruction targeted to students' appropriate instructional/developmental level
- Homework & Classwork

## Greek & Latin Roots

- 4 roots per week
- Completed in class, study at home for assessment

tion  
sion

# Word Work

## Nifty Fifty Thrifty

"Nifty Thrifty Fifty words contain common roots, prefixes and suffixes. To help students learn a system for decoding and spelling big words, they will learn to read, spell and understand common spelling patterns of 50 words. Once students know the spelling patterns of these words, they can apply that knowledge to help them to spell and build meaning for many other words. Patricia Cunningham, author and respected educational lecturer, writes that for each Nifty Thrifty Fifty word a reader knows, she or he can read at least 7 more words. That means that by mastering the Nifty Thrifty Fifty words listed, students can use at least 350 additional words when reading and writing."

tion  
sion

# Science

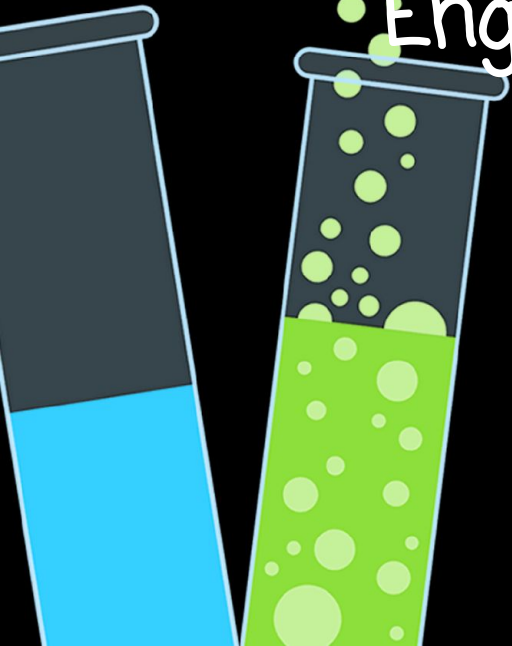
MP 1: Physical Sciences &  
Engineering & Design Processes

MP 2: Physical Sciences &  
Engineering & Design Processes

MP 3: Earth/Space Sciences &  
Engineering & Design Processes

MP 4: Life Sciences

The Family Life and Disease Prevention & Control Units  
will be taught at the end of MP3, beginning of MP4.  
There will be a parent information meeting prior to  
signing the permission form.



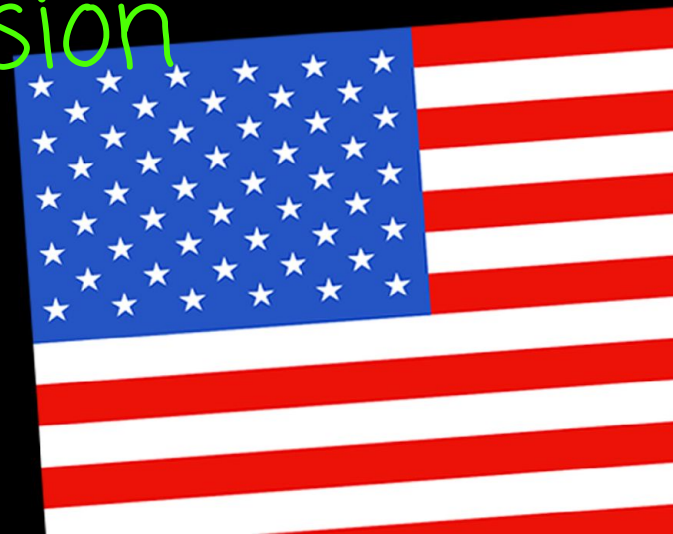
# Social Studies

**MP 1:** Colonies & American Revolution

**MP 2:** Forming Our Government

**MP 3:** Westward Expansion

**MP 4:** Financial Literacy



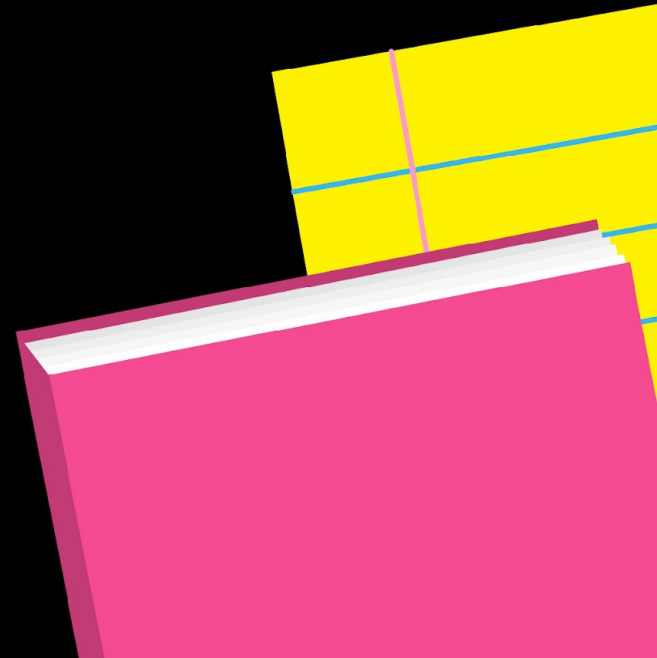


# Homework Assignments

**For the most part**, homework will be assigned on Monday and due Friday. Students will write their homework assignments in their agendas. Parents can check the weekly assigned homework on the class website.

**Absent:**

"Ketchup Work" Folders



# Homework Assignments

## The Purpose of Homework:

1. Provide practice in applying concepts and skills initially presented in the classroom.
2. Extend and strengthen learning concepts and skills related to instructional objectives.
3. Develop learning skills such as initiative, responsibility, self-direction, and organization.



# Fieldtrips



**Strathmore** (fall)

**Kid Museum** (fall/winter)

**MD Science Center** (winter)

**Mount Vernon** (spring)





Respectful

Responsible

Intellectual  
Risk Takers

Gritty

Zesty

SLES  
Wildcats  
are Roarin'  
Citizens!



### **Respectful**

- Treat all with kindness
- Make sure others feel included, accepted, and safe



### **Responsible**

- Come to school prepared to learn
- Practice self-control and be accountable for your actions



### **Intellectual Risk Taker**

- Embrace active and continuous learning
- Explore different possibilities



### **Gritty**

- Set and achieve goals
- Show perseverance by never giving up



### **Zesty**

- Always assume the best in others
- Share a smile and stay positive



# Thank you so much for coming!

If you ever have any questions or concerns please contact me.

